

Be Prepared

Emergency Water Supply Locations for Times of Crisis

In the event of a disaster, bring containers to the locations listed on our website.

Nearest emergency water supply location:
 Display this paper in a visible place.

Maintain an emergency supply of drinking water at home

Due to interrupted transportation, traffic congestion, and other factors, it can take time for emergency water supply locations to be established. Please store drinking water to prepare for a disaster.

Maintaining an Emergency Water Supply
 9L per person (3L per day x 3 days)

To Store Tap Water

- **Containers** : Clean containers with lids (e.g. plastic water tanks or bottles)
 ※Fill containers to the brim to minimize air contact.
- **Storage** : Store at room temperature in a dark place for up to 3 days, or in the refrigerator for up to 10 days.



Prepare storage containers for an emergency water supply

Make it a habit to prepare storage containers in your day-to-day. Water is heavy! A backpack or wheeled bag to transport your supplies can be very helpful.

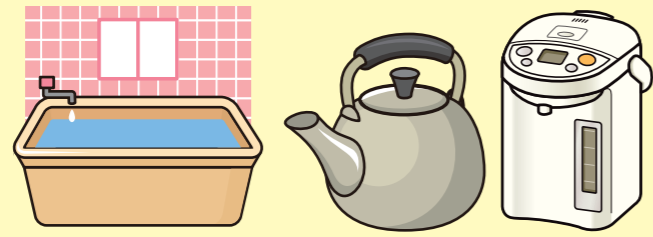


Conserve water for your daily needs

Keep water in your bathtub after taking a bath until next time you use it. (For use in laundry, bathroom, etc.)

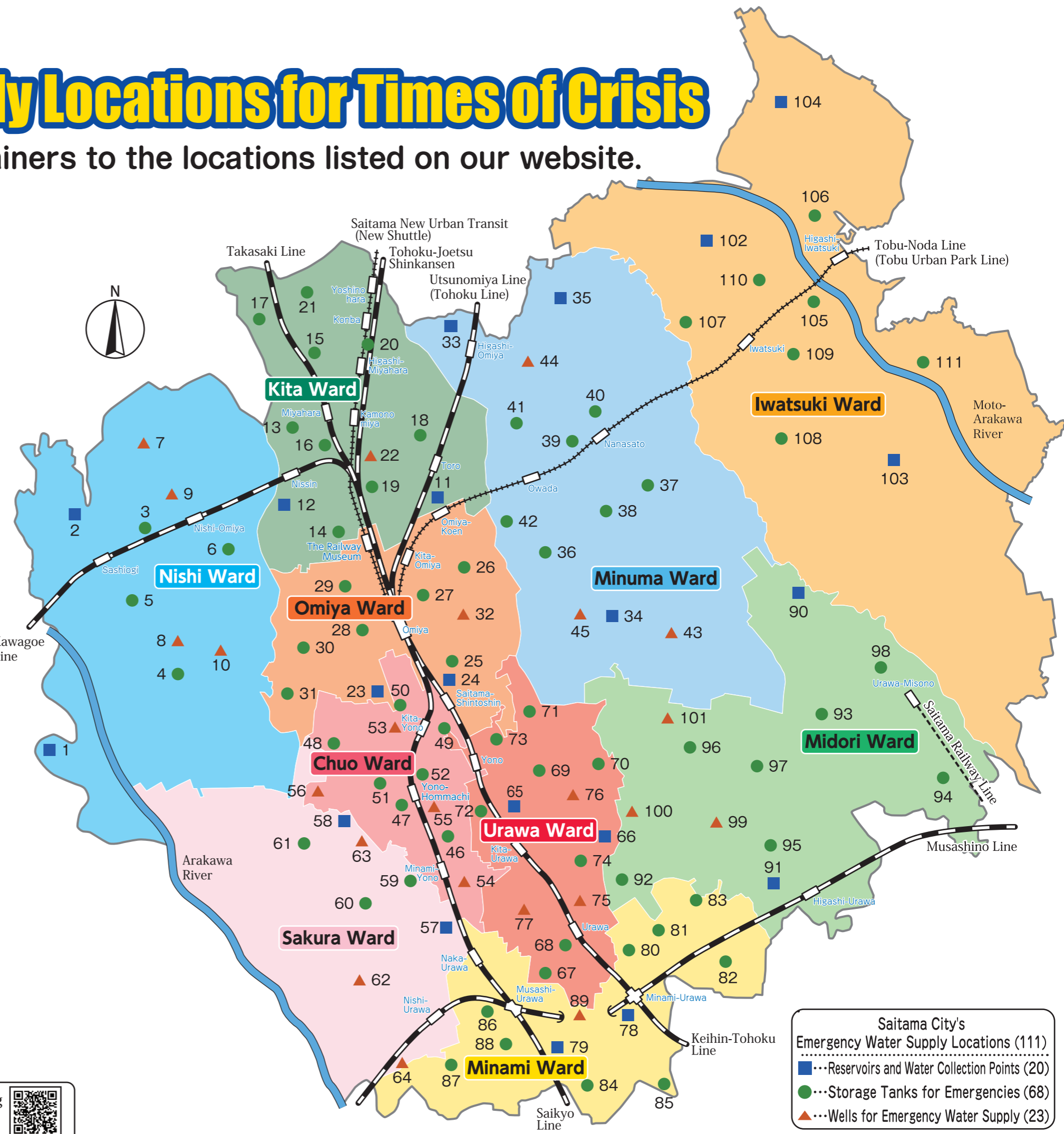
Fill your pot and kettle with drinking water before going to bed.

Put a lid on your bathtub to prevent babies from falling into the water.



Saitama City Waterworks Bureau

A list of Saitama City's emergency water supply locations can be found on the following webpage: <https://www.city.saitama.jp.001/006/002/049/001/p062264.html>

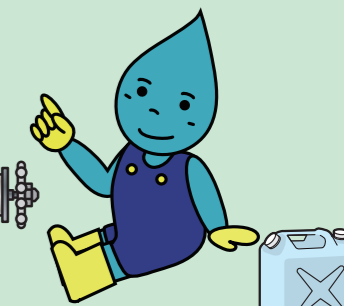


Saitama City's
 Emergency Water Supply Locations (111)

- Reservoirs and Water Collection Points (20)
- Storage Tanks for Emergencies (68)
- ▲ Wells for Emergency Water Supply (23)



Chappy



Pitch

List of Emergency Water Supply Locations

Facility Location				
Nishi Ward (10)	1	Mamiya Water Distribution Plant	351 Iida-Shinden	■
	2	Hokubu Water Distribution Plant	880-1 Hourai	■
	3	Sashiogi Elementary School	1-49-6 Nishi-Omiya	●
	4	Mamiya Junior High School	589-1 Futatsumiya	●
	5	Tsuchiya Junior High School	1766-1 Tsuchiya	●
	6	Omiya-Nishi Junior High School	6-1558 Mihashi	●
	7	Sashiogi-Kita Elementary School	1506-1 Nakakugi	▲
	8	Sakae Elementary School	811 Iida	▲
	9	Sashiogi Junior High School	3-31-1 Nishi-Omiya	▲
	10	Omiya-Nishi Elementary School	5-1359 Mihashi	▲
Kita Ward (12)	11	Takahana Water Purification Plant	200 Bonsaicho	■
	12	Nisshin Water Purification Plant	1-734 Nisshincho	■
	13	Nissinkita Elementary School	3-178 Nisshincho	●
	14	Nisshin Junior High School	2-503-1 Kushihikicho	●
	15	Miyahara Elementary School	4-102-6 Miyaharacho	●
	16	Tsubasa Elementary School	3-902-4 Miyaharacho	●
	17	Omiya-Bessho Elementary School	42-1 Besshocho	●
	18	Osato Elementary School	1 Hongoucho	●
	19	Higashi-Onari Elementary School	2-12 Higashi-Onaricho	●
	20	Maetani Park	1-9 Yoshinocho	●
	21	Tsutsujigaoka Park	2-213 Yoshinocho	●
	22	Comprehensive Waterworks Center	2-445-1 Higashi-Onaricho	▲
Omiya Ward	23	Omiya Water Distribution Plant	4-534-1 Sakuragicho	■
	24	Shintoshin Water Distribution Plant	4-265 Kishikicho	■
	25	Omiya-Minami Elementary School	3-87 Kishikicho	●
	26	Omiya-Higashi Elementary School	3-145 Horinouchicho	●
	27	Omiya-Kita Elementary School	3-84 Miyacho	●
	28	Sakuragi Junior High School	4-219 Sakuragicho	●

Facility Location				
Omiya Ward (10)	29	Onari Elementary School	2-282 Onaricho	●
	30	Mihashi Elementary School	2-20 Mihashi	●
	31	Omiya International Secondary School	4-96 Mihashi	●
	32	Omiya-Higashi Junior High School	1-99 Horinouchicho	▲
	33	Higashi-Omiya Water Purification Plant	4-51-1 Higashi-Omiya	■
Minuma Ward (13)	34	Tobu Water Distribution Plant	1567-1 Mikura	■
	35	Fukasaku Water Distribution Plant	921-1 Fukasaku	■
	36	Omiya-Yahata Junior High School	357 Minami-Nakamaru	●
	37	Nanasato Elementary School	312 Higashimiyashita	●
	38	Oya Junior High School	1634-2 Oya	●
	39	Hasunuma Elementary School	1070 Hasunuma	●
	40	Harusato Junior High School	268-19 Kofukasaku	●
	41	Osato-Higashi Elementary School	2-998 Owadacho	●
	42	Omiya Gymnasium	1-305 Owadacho	●
	43	Katayanagi Junior High School	551 Mikura	▲
	44	Shima Elementary School	533-2 Shimacho	▲
	45	Ebinuma Elementary School	710-5 Higashi-Arai	▲
	Chuo Ward (11)	46	Suzuya Elementary School	5-1-1 Suzuya
47		Yono-Nishi Junior High School	8-10-33 Suzuya	●
48		Yono-Seihoku Elementary School	4-3-7 Ennami	●
49		Shimo-Ochiai Elementary School	1-7-33 Kami-Ochiai	●
50		Kami-Ochiai Park	4-11 Kami-Ochiai	●
51		Yono Park	1-14 Hommachi-Nishi	●
52		Chuo Ward Office	5-7-10 Shimo-Ochiai	●
53		Yono-Hachiman Elementary School	5-23-14 Hommachi-Higashi	▲
54		Yono-Minami Junior High School	2-6-25 Oto	▲
55		Yono-Chuo Park	4-7 Shin-Nakazato	▲
56		Hachioji Park	4-2 Hachioji	▲

Facility Location				
Sakura Ward (8)	57	Tsuchiai Water Purification Plant	8-25-30 Nishibori	■
	58	Seibu Water Distribution Plant	646 Jinde	■
	59	Nakajima Elementary School	1-28-1 Nakajima	●
	60	Sakawa Elementary School	1-7-1 Sakawa	●
	61	Okubo-Higashi Elementary School	331 Okubo-Ryoke	●
	62	Shibiraki Elementary School	2-18-1 Shibiraki	▲
	63	Kami-Okubo Junior High School	861-1 Kami-Okubo	▲
	64	Tajima Junior High School	10-13-1 Tajima	▲
Urawa Ward (13)	65	Kita-Urawa Water Purification Plant	1-18-2 Harigaya	■
	66	Higashi-Urawa Water Purification Plant	2-4-3 Komaba	■
	67	Kishicho Elementary School	5-20-4 Kishicho	●
	68	Takasago Elementary School	4-1-29 Kishicho	●
	69	Kizaki Elementary School	4-19-4 Ryoke	●
	70	Daito Elementary School	3-14-1 Daito	●
	71	Ohara Junior High School	3-1-11 Ohara	●
	72	Tokiwa Junior High School	4-1-9 Harigaya	●
	73	Kami-Kizaki Elementary School	3-4-3 Kami-Kizaki	●
	74	Saitama Municipal Urawa Baseball Stadium	4-25 Motobuto	●
	75	Nakamoto Elementary School	2-12-31 Motobuto	▲
	76	Kizaki Junior High School	2-17-1 Segasaki	▲
	77	Waterworks Office	6-15-20 Tokiwa	▲
Minami Ward (7)	78	Former Minami-Urawa Water Purification Plant	1-16-22 Minami-Honcho	■
	79	Shirahata Water Distribution Plant	6-15-16 Shirahata	■
	80	Oyaba Elementary School	1-18-3 Minami-Urawa	●
	81	Yada Elementary School	5-10-6 Daitakubo	●
	82	Zenmae Elementary School	2500-1 Daitakubo	●
	83	Oyaguchi Junior High School	21 Hirogayato	●
	84	Minami-Urawa Junior High School	6-1-33 Tsuji	●

Facility Location				
Minami Ward (5)	85	Buzo Elementary School	5-16-29 Buzo	●
	86	Urawa-Osato Elementary School	7-14-28 Bessho	●
	87	Nishi-Urawa Elementary School	1-3-5 Magamoto	●
	88	Numakage Municipal Swimming Pool	2-7-35 Numakage	●
	89	Minami-Urawa Elementary School	1-1-20 Shirahata	▲
Midori Ward (12)	90	Nanbu Water Distribution Plant	992-1 Kaminoda	■
	91	Omagi Water Distribution Plant	3-7-25 Higashi-Urawa	■
	92	Harayama Junior High School	1-10-22 Daitakubo	●
	93	Misono Junior High School	2550-3 Osaki	●
	94	Daimon Elementary School	1189 Daimon	●
	95	Omagi Junior High School	4-29-1 Higashi-Urawa	●
	96	Mimuro Elementary School	1994 Mimuro	●
	97	Matsushiba Park	2-4 Shibahara	●
	98	Misono-Kita Elementary School	2-12-11 Misono	●
	99	Higashi-Urawa Junior High School	1207-1 Nakao	▲
	100	Saido Elementary School	1-1-1 Saido	▲
	101	Saitama City Hospital	2460 Mimuro	▲
Iwatsuki Ward (11)	102	Kanashige Water Distribution Plant	52-18 Kanashige	■
	103	Minami-Shimoarai Water Distribution Plant	907-8 Minami-Shimoarai	■
	104	Ainohara Water Distribution Plant	267-1 Ainohara	■
	105	Iwatsuki-Hommaru Citizen's Center	3-17-1 Hommaru	●
	106	Iwatsuki-Suwa Park	4-4 Suwa	●
	107	Nishihara Elementary School	6-25 Nishihara	●
	108	Hakuyo Junior High School	454 Shimpukuji	●
	109	Iwatsuki Junior High School	1-14-35 Nakacho	●
	110	Johoku Elementary School	6619 Iwatsuki	●
	111	Kawadori Junior High School	435 Nagamiya	●

If a disaster occurs...

First, make sure that you are safe. Then, check the damage and secure a supply of water.

Q What should you do if the water stops running?

Congestion and crowding are expected, so please come on foot.

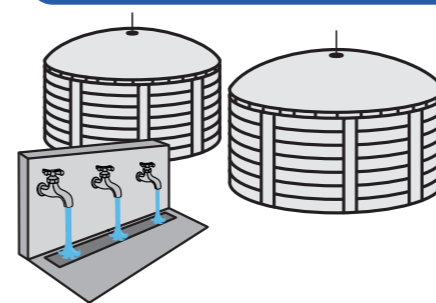
A Please bring containers to an emergency water supply location and obtain a supply of water.



Saitama City's Emergency Water Supply Locations (111)

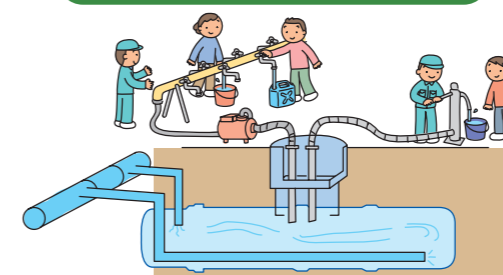
- ...Reservoirs and Water Collection Points(20)
- ...Storage Tanks for Emergencies(68)
- ▲...Wells for Emergency Water Supply(23)

Reservoirs and Water Collection Points



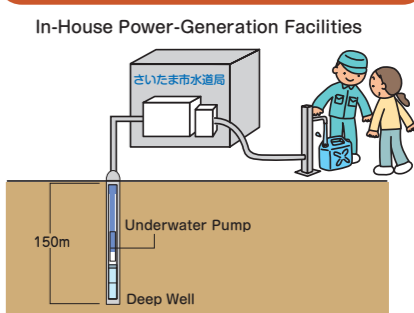
Usually, a large amount of water is stored in these reservoirs, and they are the emergency water supply places in times of disaster.

Storage Tanks for Emergencies



The storage tanks are connected with water pipes. Normally, the water inside the tank is circulated. The gate is closed at the time of disaster and the 100m³ tank secures drinking water for 11,000 people for three days (3 liters a day per person). (The tank at Iwatsuki-Hommaru Citizen's Center is 60m.)

Wells for Emergency Water Supply



These facilities can pump up water from the well using their in-house power-generation system, to continuously supply drinking water at the time of disaster like earthquakes.